

A fisheries manager's perspective on EAFM at NAFO

*Applying the Ecosystem Approach to Fisheries Management in
Areas Beyond National Jurisdiction Symposium*

FAO Headquarters - Rome, Italy

Day 2 – Science-management interface and management

March 12, 2025

Kate Johnson

Senior Policy Advisor,
International Fisheries Policy

Fisheries and Oceans Canada



Overview

➤ Canada's Role in NAFO

- Contributions towards the incorporation of EAFM into NAFO decision-making

➤ NAFO's EAFM History

- Bycatch measures
- NAFO's fishing footprint and exploratory bottom fishing protocol
- Area-based bottom fishing closures to protect VMEs and seamounts at fishable depths
- Ecosystem reference point – 2TCI

➤ NAFO Organizational Structure

- Impact of joint Commission and Scientific Council working groups
 - Working Group on the Ecosystem Approach Framework to Fisheries Management (WG-EAFFM)

➤ Conclusions

Ecosystem Approach in NAFO

1) Bycatch measures

- Gear restrictions – minimum mesh sizes, sorting grids;
- Bycatch limits per haul and onboard, gear restrictions and move-along rules if defined thresholds are exceeded;
- Non-retention of Greenland sharks;

Consequences if rules are not adhered to.

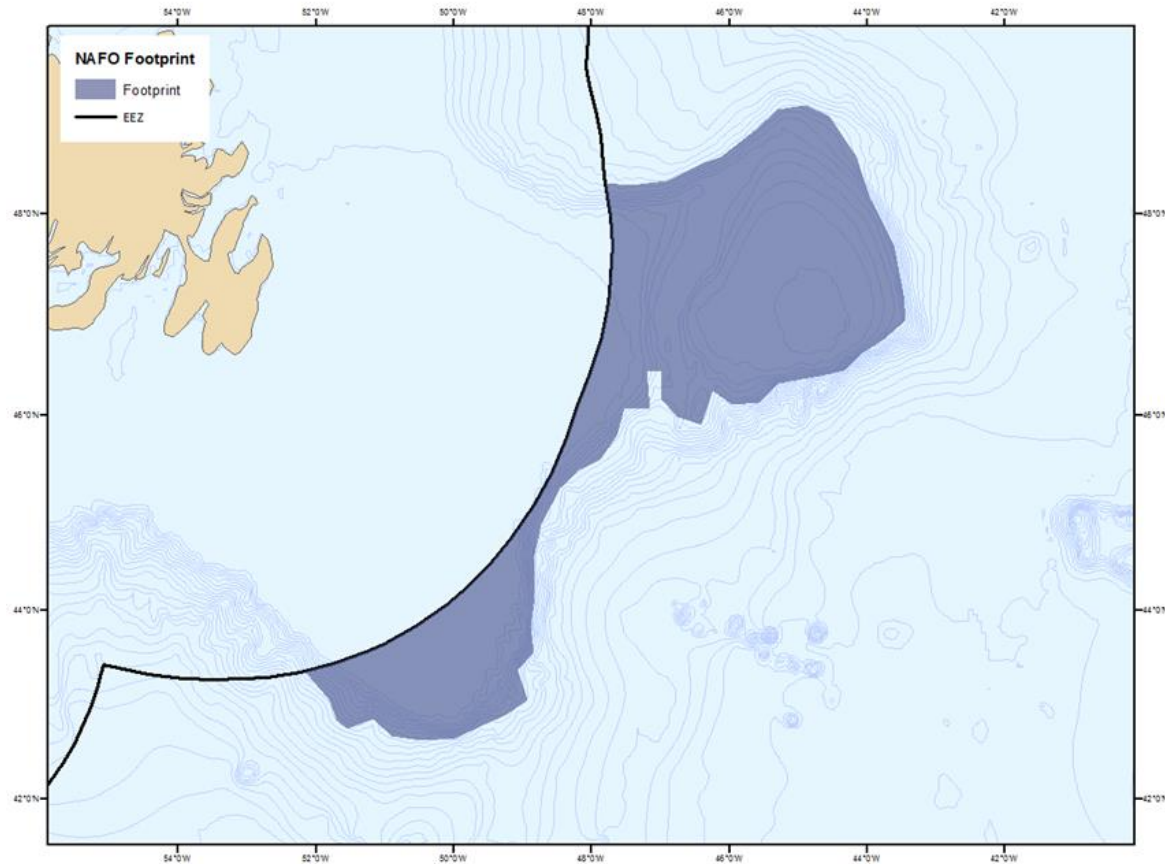


Ecosystem Approach in NAFO

2) The definition of NAFO's fishing footprint

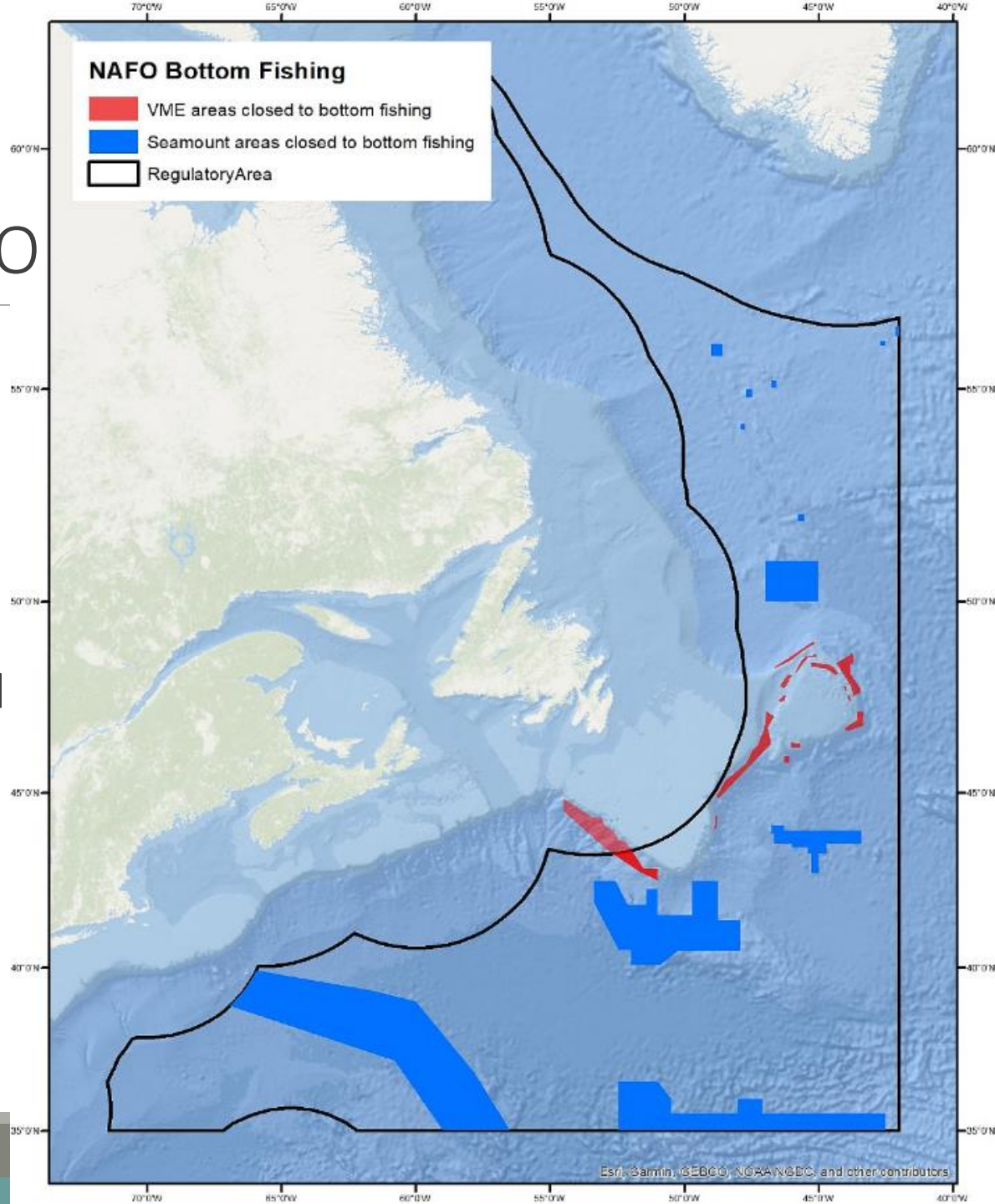
- Limits bottom fishing to a small segment of the NAFO Regulatory Area

Establishment of an **exploratory bottom fishing protocol**



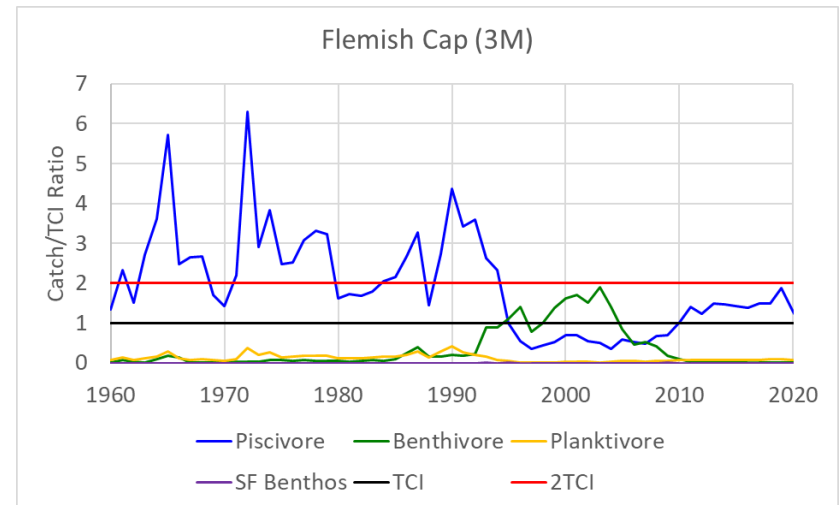
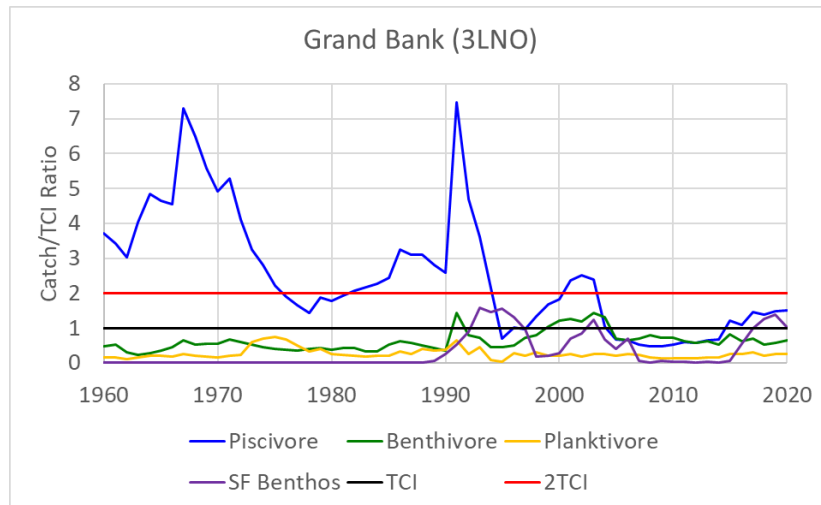
Ecosystem Approach in NAFO

- 3) The implementation of **area-based bottom fishing closures** to protect VMEs within the fishing footprint and all seamounts at fishable depths within the NAFO Regulatory Area.

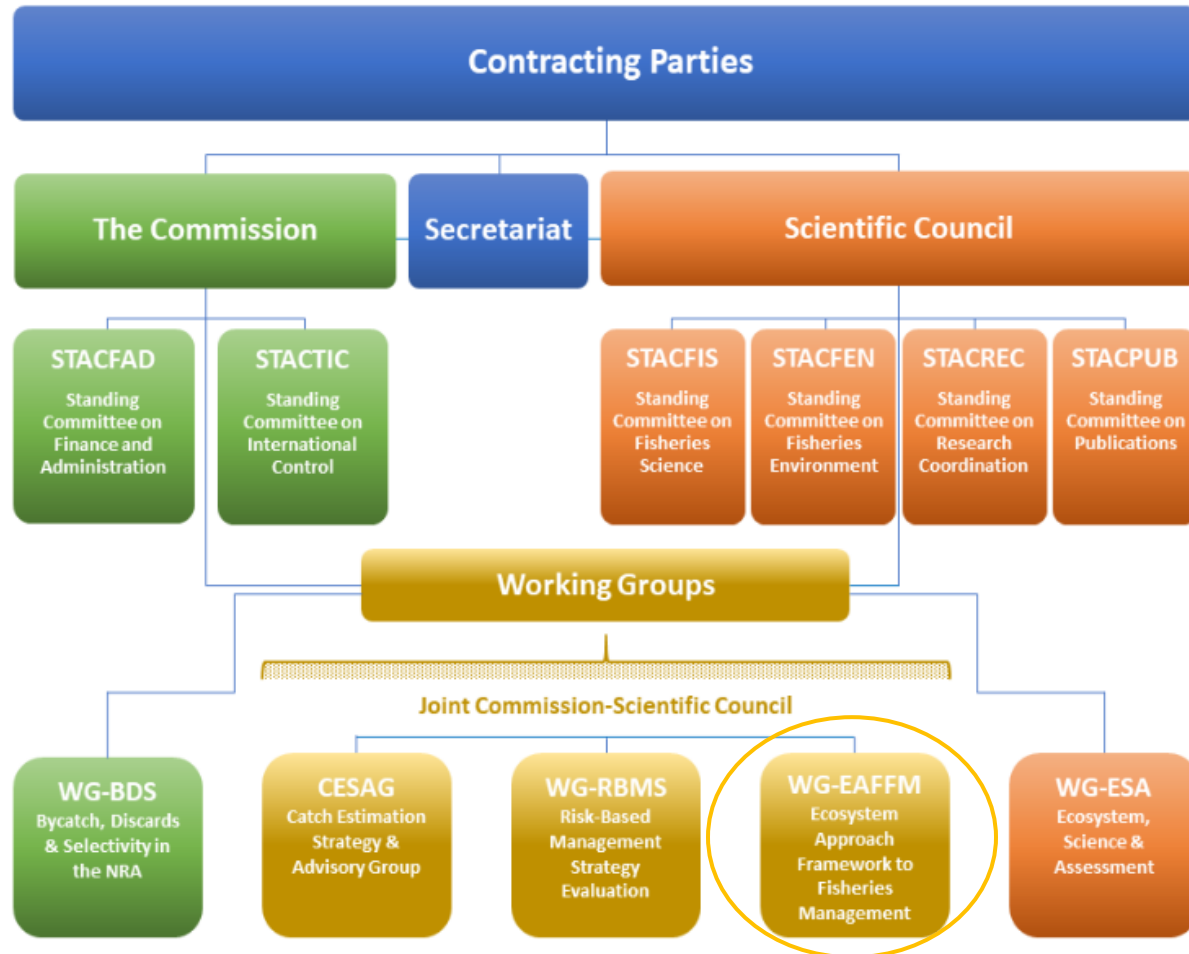


Ecosystem Approach in NAFO

- 4) The adoption of an **ecosystem reference point (2TCI)**, which aims to account for limitations in the ecosystem in terms of total fisheries production potential and inform the Commission's management decision-making to avoid ecosystem level overfishing.



NAFO Structure: Joint Working Groups



Alternative Fora to Advance Challenging Issues

Types of engagement fora and processes:

- 1) Formal – e.g., Scientific Council providing formal advice to the Commission, management measures formally negotiated by Contracting Parties
- 2) Semi-formal – e.g., Joint Working Group on the Ecosystem Approach Framework to Fisheries Management (WG-EAFFM) open discussions and formal recommendations to the Commission
- 3) Informal - Open, non-delegated, Chatham House formats – e.g., open dialogue, workshops, etc.

Conclusions

Lessons learned from NAFO's experience:

- Need to bring managers and stakeholders along when trying to advance novel work that will have socio-economic impacts.
- Joint science/management working groups key to NAFO's success in its progress to implement EAFM.
- Consideration of practical implementation concerns is necessary to find a feasible approach with buy-in.
 - Use of theoretical role-playing scenarios in Chatham House Rules workshop settings can be helpful.

Questions?
